



jordan fishwick

Thornton Hall Market Street, Hayfield, SK22

Guide Price £499,950



Market Street High Peak SK22 2EW

Guide Price £499,950




The Property

Dating back to the 1800s, this striking double-fronted period home has been comprehensively renovated throughout and thoughtfully enhanced in recent years, with major improvements including a new roof, updated plumbing and a complete rewire. Beautifully presented inside, the property occupies a superb position close to the heart of Hayfield, perfectly placed for the excellent amenities of this highly sought-after village. Arranged over three floors, the accommodation offers four well-proportioned bedrooms alongside a wealth of character features blended seamlessly with modern finishes. The layout comprises an inviting entrance hall, a refitted dining kitchen, and a cosy living room featuring a wood-burning stove. The first floor provides two bedrooms and a luxurious family bathroom, with two further generous bedrooms located on the second floor. Outside, charming cottage-style gardens are accompanied by a useful detached store. Viewing is highly recommended to fully appreciate the quality of the extensive renovation works and appeal of this exceptional home.



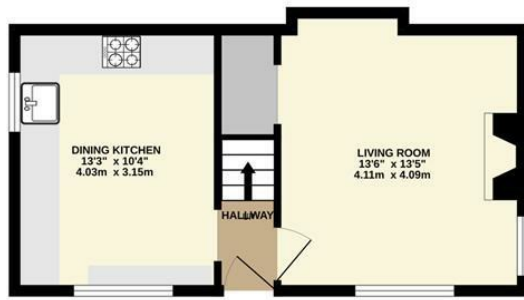
- Immaculately presented and fully modernised throughout
- Prime village location in the heart of Hayfield
- Characterful four-bedroom period home
- Spacious accommodation arranged across three floors
- Charming cottage-style gardens with a practical detached store
- Benefitting from double glazing and gas central heating
- Rich in original features and period charm
- Cosy living room with wood-burning stove
- Stylish refitted kitchen and luxury bathroom
- Viewing strongly recommended



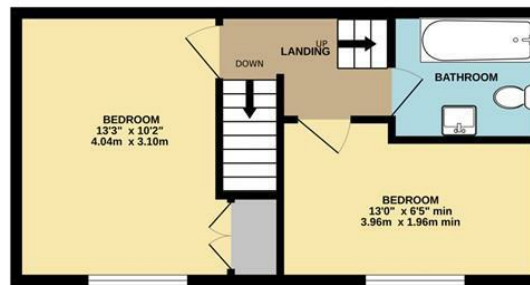
Energy Efficiency Rating		
	Current	Potential
Very energy efficient - lower running costs		
(92 plus) A		
(81-91) B		86
(69-80) C		
(55-68) D	66	
(39-54) E		
(21-38) F		
(1-20) G		
Not energy efficient - higher running costs		
England & Wales		EU Directive 2002/91/EC 



GROUND FLOOR



1ST FLOOR



2ND FLOOR



Whilst every attempt has been made to ensure the accuracy of the floorplan contained here, measurements of doors, windows, rooms and any other items are approximate and no responsibility is taken for any error, omission or mis-statement. This plan is for illustrative purposes only and should be used as such by any prospective purchaser. The services, systems and appliances shown have not been tested and no guarantee as to their operability or efficiency can be given.
Made with Metropix ©2025



These particulars are believed to be accurate but they are not guaranteed and do not form a contract. Neither Jordan Fishwick nor the vendor or lessor accept any responsibility in respect of these particulars, which are not intended to be statements or representations of fact and any intending purchaser or lessee must satisfy himself by inspection or otherwise as to the correctness of each of the statements contained in these particulars. Any floorplans on this brochure are for illustrative purposes only and are not necessarily to scale.

Offices at: Chorlton, Didsbury, Disley, Hale, Glossop, Macclesfield, Manchester Deansgate, Manchester Whitworth Street, New Mills, Sale, Wilmslow and Withington